

Price includes standard floorplan with S1 facade.



Furniture, feature lighting, landscaping, driveway, window furnishings, and porch decking not provided by Eight Homes.

FIRST HOME BUYERS PRICE \$609,888

## FIXED PRICE HOUSE & LAND

### S TWO.2

Lot 2306, Firmona Ave

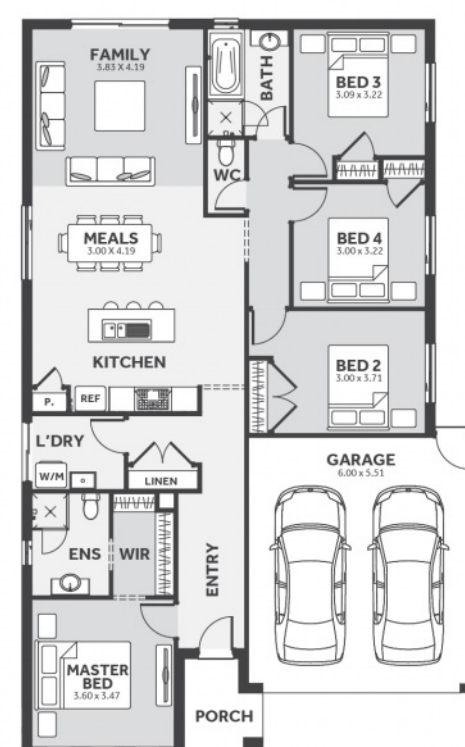
LAND SIZE: 313.00m<sup>2</sup>

### RIVERDALE VILLAGE +

4 2.0 2

182.36m<sup>2</sup> | 19.63 sqs

- ✓ Council and Developer Requirements
- ✓ 12 Month Price Freeze
- ✓ 25 Year Structural Guarantee
- ✓ \$888 Deposit
- ✓ Efficient and Simple
- ✓ Stone bench tops & 900mm appliances to Kitchen
- ✓ Stylish 8mm timber look laminate flooring
- ✓ Driveway



Please Contact  
Billy Spaseski  
0451 985 551  
Billys@8homes.com.au

*We make it easy!*



