



MADE

MIMOSA HOMES



BALMORAL 339

\$822,901

Lot 2320 Riverdale Village Estate
Tarneit



Mimosa Homes Proudly Presents

The Balmoral 339 House and Land Package!

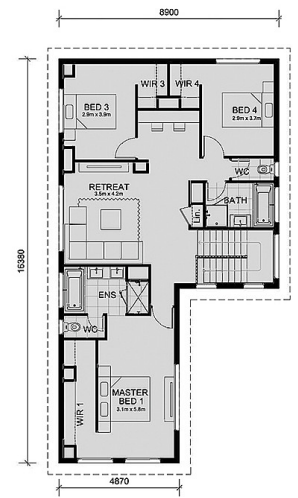
Featuring a generous open plan family & meals, large open kitchen with a butlers pantry, theatre room and a separate guest suite with its own bathroom and robe on the ground floor, while still allowing on the first floor 4 bedrooms with master offering ensuite and WIR, retreat. The Balmoral offers 5 bedrooms, 2 ensuites and central bathroom. With its clever layout and accommodating design, the Balmoral perfectly caters for a large family all while offering a touch of luxury for everyday living.

CALL BUILDER DIRECT!

All plans and facades are indicative concepts only and are not intended to be accurate depictions. Mimosa Homes reserves the right to amend plans specifications and price without notice. Package prices are based on a standard facade, standard inclusions and the availability of suitable land for development. Facade and inclusion images shown may not be standard and may not be included in the price of the home. All dimensions are approximate. Package prices do not include



GROUND FLOOR PLAN



FIRST FLOOR PLAN

Area Details

Land Size 375sqm Building Size 314sqm

Contact: Chitraksh Bhargav
chitraksh@mimosahomes.com.au

0424 447 033
www.mimosahomes.com.au

Disclaimer: Land availability and pricing is subject to the development availability. Mimosa Homes reserves the right to amend specifications and price without notice. All plans and facades are indicative concepts only, and are not intended to be accurate depictions of the building, fencing, paths, driveways or landscaping and are not necessarily to scale all dimensions are approximate (refer to working drawings). Package prices are based on standard facades and standard inclusions.