



Tarneit

19 sq  4  2  2  375m²

House & Land Package

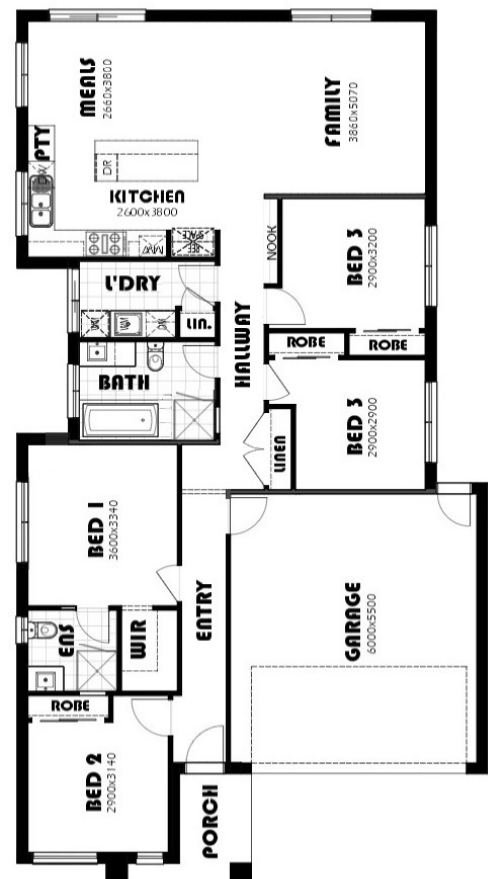
Lot 2320 Granada Drive (Riverdale), Tarneit

\$681,600 INC FHB- FULL TURNKEY

AMAZING DISPLAY HOME INCLUSIONS

INCLUDES MORE THAN \$55,000 OF PREMIUM TURNKEY INCLUSIONS...

- Carpet & tile flooring throughout
- 2590mm ceiling heights
- 20mm stone benchtops to kitchen and bathrooms
- LED downlights throughout
- Mirror sliding doors to wardrobes
- Westinghouse appliances
- Full kitchen with soft close drawers
- Brick above windows
- Remote control garage
- Front & Rear landscaping
- Sprinkler system to rear garden
- Coloured concrete to driveway and rear yard
- Letter box and clothes line
- Blinds to all windows and sliding doors
- In-situ tiled shower bases & semi frameless screens
- Fly screens and locks to all openable windows
- Fencing allowance
- Ducted heating & split system cooling
- All fixtures and fittings



Contact - Shweta Kharbanda

Mobile: 0474 321 859 | Email: shweta@hlvictoria.com.au

Pricing based on developer supplied engineering & plan of subdivision. Land prices and availability prior to purchase will need to be confirmed. Community Infrastructure Levy and Asset Protection not included in pricing and to be arranged directly by client with developer, (where applicable). Subject to developer and council approval. Package price does not include any stamp duty, government, legal or bank charges. Alterations made may incur additional charges. H&L Victoria PL reserves the right to withdraw or amend pricing and inclusions without notice. Images for illustrative purposes only and may depict upgrade options available at additional charges such as lighting, window furnishings, timber look garage door and timber windows.