



BELMONT 188

\$599,901

Lot 2304 Riverdale Village Estate
(Expected Title Q2, 2022)



Mimosa Homes Proudly Presents

The Belmont 188 House and Land Package!

* Experience The Mimosa Homes Difference!

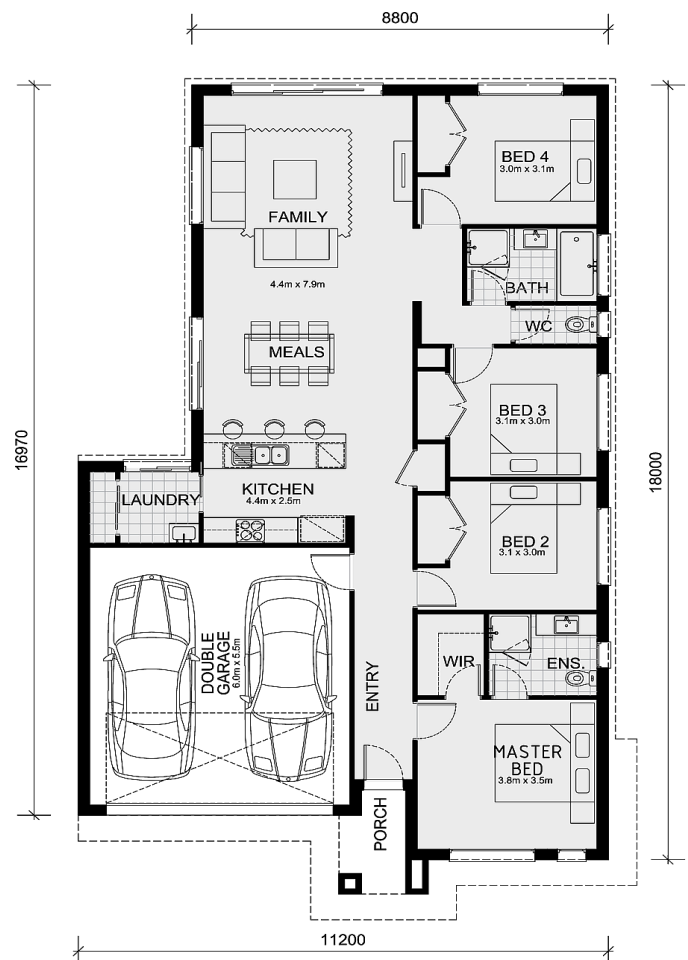
* Mimosa Homes Added Value Inclusions:

- Inclusive of site costs & connections with H1 class slab as per standard inclusions!
- Range of facades including feature render!
- Quality floor coverings throughout entire home!
- Higher ceilings 2550mm!
- Downlights to living areas!
- Stone bench top to kitchen!
- 600mm S/S upright oven and cook top with slide-out rangehood!
- Stainless steel Dishwasher and Microwave with trim kit!
- Overhead cupboards & wine rack! (Design specific)
- Remote control panel sectional lift garage door!
- 6 star energy with solar hot water!
- Flexible floor plans & so much more!

CALL BUILDER DIRECT!

All plans and facades are indicative concepts only and are not intended to be accurate depictions.

Mimosa Homes reserves the right to amend plans



Area Details

Land Size 313sqm Building Size 171sqm

Contact: **Chittraksh Bhargav**
chittraksh@mimosahomes.com.au

0424 447 033
www.mimosahomes.com.au